

- Atlanta, GA
- Boston, MA
- Los Angeles, CA
- Miami, FL
- New York, NY
- Orlando, FL
- Philadelphia, PA
- Phoenix, AZ
- Princeton, NJ
- Washington, DC



CURRENT EVENTS



John Saad and Julia Rogers take the stage at the 2016 Healthcare Facilities Symposium & Expo



Marsha Miller presented at Mass College of Art for the Society of Marketing Professional Services (SMPS)



Harvard Business School, Chao Center Ribbon Cutting Ceremony



Penn State Architectural Engineering Career Fair



Vanderweil Engineers partnered with RTKL to design the new Presidential Transition Team spaces

Presentations

Healthcare Facilities Symposium & Expo: On September 20th, John Saad and Julia Rogers highlighted the ways in which energy conservation efficiency measures, energy mapping, and net zero based design help to optimize program and layout requirements for high performance hospitals.

7x24 Exchange National Conference: On August 25th, Chris McLean and Greg Botteon (Whiting-Turner) presented their business case analysis called *Impact of Technology Trends: Leveraging Technology to Optimize Data Center Trends*. They referred to examples where the design and construction teams leveraged technology to facilitate data center trends such as total cost of ownership, reduced capital expenditures, and increased time to market.

Society of Marketing Professional Services: Marsha Miller was a guest lecturer at the Massachusetts College of Art and Design on October 5th. In association with the Boston Society of Marketing Professional Services (SMPS), Marsha presented “A/E/C Marketing & Business Development 101” to graduate students enrolled in a Professional Practice class taught by William Roberts, a professor in the Department of Architecture.

Penn State University, Academic Advancement Program: On November 8th, Julia Rogers and Michael Walsh will be teaching a class with HOK at Penn State University (PSU), as part of their Academic Advancement Program for architectural students. The students are currently in their “Synthesis” semester, working on a real world architectural project that includes a requirement for green infrastructure. The class will focus on the methodologies used to incorporate sustainability into the design of the PSU Chemical Engineering and Biomedical Engineering project.

Grand Opening Celebrations

Topping Off Ceremony: On August 18th Michael Lesiak attended the topping-off ceremony at the University of Southern California. This was in celebration of the Michelson Center for which Vanderweil provided MEP services.

Ribbon Cutting Ceremony: Dave Pinto attended the ribbon cutting ceremony for the University of Rhode Island, New Chemistry Building on September 11th.

Career Fairs

Penn State Architectural Engineering Career Fair: Patrick Murphy, Jim Rodgers, and Mike Kennedy represented Vanderweil at the Penn State career fair on September 20th.

Clarkson University Career Fair: Mike Kennedy promoted Vanderweil's internship program and career opportunities at the fair on September 22nd.

Notable Projects (...and Timely)!

Presidential Transition Team: Vanderweil partnered with RTKL to design the new Presidential Transition Team (PTT) spaces in Washington, DC in a design-build project delivery approach. Typically, every four years new space is built-out to support the space needed to reflect the change in our country's executive leadership. This project changes that approach to provide a permanent space that will be used moving forward with new administrations as needed. The PTT will occupy a full wing of the 1800 F Street building and house a variety of support spaces. The spaces are designed to support up to 500 staff members with varying program elements such as general office, conference room, and common spaces. Due to the confidentiality and sensitive communications that will occur, the project includes sensitive compartmented information facility areas.

PROJECT WINS

ACADEMIC

Duke University, K5/Edens Residential Hall, Durham, NC
In conjunction with William Rawn Associates, Vanderweil is providing engineering services for approximately 201,000 gsf of three residence hall buildings containing 355 beds. The program will include four-person suites, common areas, a dining and seating area for 150 seats, and associated support areas such as a loading dock, laundry, storage, vending, housekeeping, and trash. The project will be designed to achieve LEED® Gold certification. – *Boston Office*

COMMERCIAL

Martingale Asset Management, 888 Boylston Street, Boston, MA
Teaming with Visnick & Caulfield, Vanderweil was awarded a fit-out consisting of approximately 9,600 sf of interior fit-out for Martingale Asset Management located on the 14th floor of 888 Boylston Street. The programming includes typical office and support areas. – *Boston Office*

S&P Global, 225 Franklin Street 15th Floor, Boston, MA
Working along side Gensler, Vanderweil will provide engineering services for the interior build-out of approximately 25,000 usable sf of Suite 1500 at 225 Franklin Street in Boston, MA. The project includes select demolition of existing interior construction and build-out of new office space, along with design services for office space, conference rooms, common areas, storage, elevator lobby, corridors and possibly new plumbing fixtures and finishes in the base building restrooms. – *Boston Office*

Leggat McCall Properties, LLC, Harrison/Albany Block Project, Boston, MA
Collaborating with Childs Bertman Tsekare (CBT) to provide LEED services for the Harrison/Albany block located in Boston's South End neighborhood. The project consists of the construction of approximately 700 apartment units within two buildings, ranging in height from 11 to 19 stories above a three-level below grade parking structure, approximately 213,000 sf with 700 parking spaces. – *Boston Office*

HEALTHCARE

Atlantic Health System, Chilton Medical Center, Hybrid Pediatric Emergency Department Expansion, Pompton Plains, NJ
In conjunction with Francis Cauffman, Vanderweil will be providing MEP services for the multi-phase renovation and expansion of the existing Emergency Department to create a hybrid Pediatric and Adult Emergency Department. The project renovates approximately 14,000 sf and includes the relocation of existing Cardiovascular Services spaces to create room for the Pediatric Emergency Department component of the new Hybrid ED. – *Princeton Office*

Johns Hopkins Medicine, Suburban Hospital Outpatient Behavioral Health Suite and IV Therapy Suite, Bethesda, MD
The project consists of a new air handling unit and MEP fit out for a 2,780 sf Outpatient Behavioral Health (OPBH) Suite and adjacent 2,400 sf IV Infusion Therapy Suite. The renovated spaces include private IV therapy treatment rooms, nurse support space, waiting room, group behavioral health therapy rooms, interview rooms, and offices. – *Alexandria Office*

POWER & UTILITIES

City of Cambridge, Low Carbon Energy Supply Strategy Study, Cambridge, MA
Working in subcontract to Ramboll, Vanderweil will provide services for a low carbon energy supply strategy study. The scope of the study is to determine energy requirements and create low carbon supply strategies for the whole city. – *Boston Office*

SCIENCE & TECHNOLOGY

University of North Carolina, Science Building, Charlotte, NC
Teaming with Clark Nexsen to provide advance planning/design services for the new science building. The facility will integrate undergraduate instructional laboratories, research laboratories, faculty and administrative offices, graduate student work space and collaboration space into a unified center for learning and research. – *Boston Office*

TECHNOLOGY DESIGN

Natixis Global Asset Management, 888 Boylston Street, IT Consulting Services, Boston, MA
Collaborating with STV/DPM to provide AV consulting services for the relocation of NATIXIS Global Asset Management to new building at 888 Boylston street. This includes consulting and project management relating to the communication carrier connectivity to cloud resources, network configuration and integration, end-user device selection and deployment, and related services. – *Boston Office*

Advent International: Boston Headquarters Relocation, Boston, MA
Working along side STV/DPM to provide technology, AV, security consulting and design services for Advent International's headquarters relocation from 75 State Street, Boston to the Prudential Center. – *Boston Office*

SkyPlex, Technology Design, Orlando, FL
Vanderweil, in conjunction with Euforria, will be providing technology design services for the new mixed-used entertainment complex. The program includes a 4-floor, 450 key hotel complex, 10,000 sf meeting room on pool deck and 20,000 sf of additional meeting space on the floor below. The garage will be 12 levels. – *Orlando Office*



GREEN INTEGRATION GROUP

Living Building

By Julia Rogers

The Green Integration Group visited the Old Oak Dojo in Jamaica Plain, MA, which is the first Living Building Challenge certified building in the New England area. The Living Building Challenge is a rigorous sustainable design certification that requires net zero energy and water use, stringent standards for local materials, as well as design concepts that are resilient in the face of climate change and considered "beautiful" and "equitable" for the environment and community. The standard can only be achieved with actual results (not only modeled) and is considered to be significantly harder to achieve than LEED®.

The team had a few things to say about their visit:

“It is not surprising, but it was really interesting to hear how significant the challenges were with the plumbing board, state, DEP, etc to push the envelope on rainwater and potable water, composting toilets, grey and blackwater, etc. The thing is though....it should be hard, and hence it’s not surprising. Being revolutionary, thinking outside the box, changing the way we think – and in this case, in relation to designing buildings and their impact on the environment, is always going to have significant challenges and face resistance. It’s really awesome to see that they pushed through it, no matter how hard it was. It’s all for the greater good of society in the future without a doubt! It was really refreshing to hear about it and see a project where a team pushed to do this, no matter how difficult it was!”
-- Paul Van Kauwenberg

“I was impressed with how quietly the ERV operates. It seems like a great solution for volume-sensitive spaces.”
-- Chuck Stellberger

“It was interesting to hear about the struggles the project encountered with the Material Petal, and I enjoyed seeing the repurposed materials taken from garages, bike shops, and other local places incorporated into the Dojo’s design.”
-- Katrina Miaoulis



Vanderweil tours the first Living Building-Certified building in Boston

Two Contra Way (TCW) Achieves LEED Certification

By Aniruddha Nene

The Two Contra Way (TCW) facility in Merrimack, NH, was recently recertified LEED® Silver by the US Green Building Council under the “Existing Buildings: Operations & Maintenance” v2009 rating system. The expansive 640,000 sf office building includes a 90,000f sf data center that supports international trading and financial operations around the clock. As an older building trying to maintain pace with LEED’s ever more stringent standards for sustainable operation, the pathway to recertification was a challenging one.

To streamline the process, the Green Integration Group conducted a gap analysis and series of preliminary site investigations of the building, including ASHRAE Energy LEED® I + II Audits. These investigations identified numerous opportunities for energy conservation and also led to updates of existing MEP systems and operational practices including waste management and housekeeping services. Throughout the recertification process, our project team was instrumental in helping establish best practices and lessons learned that can be instituted universally across all their facilities.

This extra effort, on our part, for these projects is especially important to ensure that future recertification bids under LEED v4 are also successful. TCW’s successful recertification follows in the footsteps of the BCEC’s certification earlier this year. These successes are a great reminder that our firm’s commitment to sustainability extends to the realm of existing buildings as well.

A Closer Look at the Benefits of WELL

By Alana Spencer, Katrina Miaoulis, and Aniruddha Nene

The WELL Building Standard is gaining popularity as an option for green building certification that prioritizes building occupants. WELL complements the LEED rating system as an opportunity to institute further sustainable measures, while incorporating occupant health and wellness concepts into the design process. A WELL certification can help building owners in the following ways:

- Retain employees with mental and physical support.
- Improve occupant comfort by issuing a thermal comfort survey.
- Incorporate nature in design with biophilia requirements.
- Reduce contaminants in air and water through stringent filtration requirements.

The seven features of WELL (Air, Water, Nourishment, Light, Fitness, Comfort, Mind) all combine to create a healthy and enjoyable environment for all building occupants. Though some requirements are stringent and difficult to achieve, the WELL preconditions and optimizations can be used selectively to increase a project’s sustainability regardless of whether certification is approved.

The WELL standard is accompanied by a WELL AP credential, launched last October. Similar to the LEED AP exam, this exam assesses a professional’s knowledge of the WELL Building Standard. A WELL AP is a valuable addition to any WELL project team to ensure that occupant wellness receives specific consideration while designing sustainably. Katrina Miaoulis is Vanderweil’s first WELL AP!

For more questions about the WELL building standard or obtaining your WELL AP credential, please reach out to LEED@vanderweil.com



Vanderweil’s Green Building (GB) Certification Services

By Aniruddha Nene

The Green Integration Group is excited to share our updated Sharepoint page, which contains helpful resources for credit documentation, reference guides for different rating systems, and other tools that have proved useful on past projects.

As a reminder, LEED@vanderweil.com is available to all employees as a primary channel for all generic or project-specific LEED questions. If you are contacted directly with a LEED question, please direct it to LEED@vanderweil.com, so that it is tracked for future reference.

Aside from internal resources, Vanderweil offers two tiers of project services for GB certifications:

LEED Specialist

If you are involved in a LEED project, please contact LEED@vanderweil.com to ensure that a LEED Specialist is assigned to the project, and request that LEED@vanderweil.com is added to the project within LEED Online. The scope of the LEED Specialist is as follows:

- Answer project-specific questions about how to pursue different LEED credits/ levels.
- Troubleshoot issues with LEED Online, LEEDuser, USGBC.org, and Sharepoint.
- Provide guidance on RGV LEED scope of work and documentation, and direct team members to the appropriate in-house services.

Please note that the actual completion of LEED documentation and coordination with the project team internally and externally is still the responsibility of the project team, not the LEED Specialist.

LEED Project Management

In addition to the LEED Specialist service, Vanderweil also offers in-depth LEED project management services for a fee. If you are approached with specific questions about LEED consulting services, please direct them to LEED@vanderweil.com. Below is a glimpse of the value this process brings to the firm:

- **Experience:** currently 40+ projects in design and construction / 135+ prior LEED certification projects at Vanderweil.
- **Innovation:** interaction on MEP projects drives content, tools and critical lessons-learned for upcoming projects.
- **Efficiency:** the earlier the involvement, the more streamlined the LEED analysis and documentation becomes.



Harvard University, Sherman Fairchild Biochemistry & Bauer Laboratory Buildings



Medical Area Total Energy Plant (MATEP) CTG-300

AWARDS AND RECOGNITION



Montgomery College, Bioscience Education Center

AIA Maryland Excellence in Design Award:
On September 22nd, Patrick Murphy attended the AIA Awards Dinner to accept an award for Institutional Architecture on behalf of Vanderweil for our involvement with the Montgomery College Bioscience Project.

International Institute for Sustainable Laboratories: Harvard University's Sherman Fairchild Biochemistry & Bauer Laboratory Building, a project designed and renovated

by Payette Architects and Vanderweil Engineers, was recently presented with the "Go Beyond" award at this year's annual International Institute for Sustainable Laboratories conference (I2SL) which took place in Kansas City, Missouri in late September. The "Go Beyond" award is a unique award that honors organizations, individuals, products, and projects that are advancing sustainable design and high performance facilities.

INTERNSHIP PROGRAM

Summer 2016

By Mike Kennedy

Vanderweil's intern program continued in solid fashion this summer with 10 interns hired company-wide. Their experiences included participation on project teams, attending meetings, lunch and learns, technical project presentations, and interactions with an assigned mentor. Utilizing our state of the art video conference system, interns from outside offices were included in all of the presentations.

The interns also went to project field sites and were shown actual construction and installations of our specified equipment and engineered systems. These full-time internships provided the opportunity for the engineering students to learn first-hand what Vanderweil is like for full-time employees. As the summer progressed, each intern increased their respective roles and were able to share in the satisfaction of quality work delivered to our clients.

Towards the end of the summer, the entire team of students, mentors, and technical presenters enjoyed an afternoon social outing in Boston. Vanderweil is committed to expanding this program and adding new subject matter and staff participants in upcoming years.



Interns and their mentors celebrate the end of the program, in the Boston Harbor, riding the Codzilla



As interns at the Alexandria office, William Stinger and Allison Lenhart had the opportunity to wear hardhats and receive first-hand onsite experience

BIM/REVIT

Navisworks and iConstruct

By Kevin Broughton

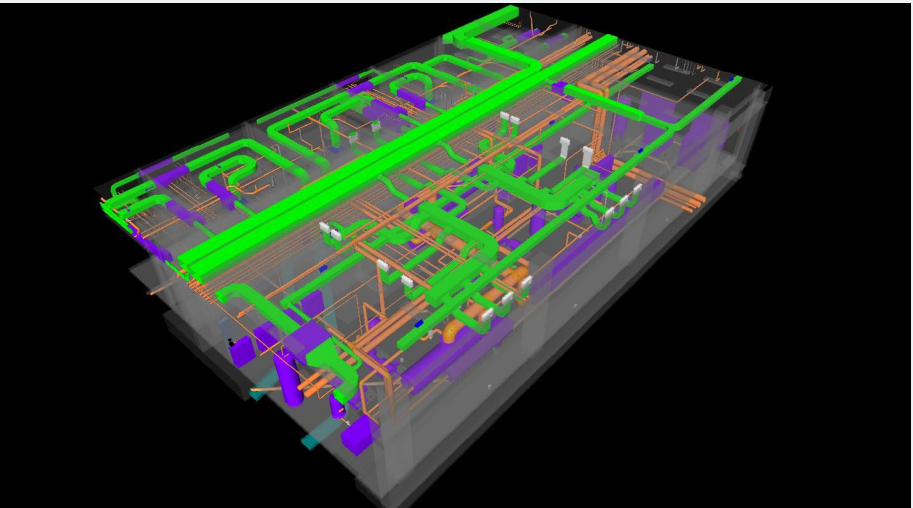
With the world of BIM evolving, contractors, architects and engineers work more closely now than ever before. Although the goal of having a coordinated model is shared among the team, the software used to accomplish this can vary.

A popular software used in this industry to make sure 3D models are coordinated is Navisworks. Navisworks allows users to open and merge 3D models of varying software types, as well as easily navigate through large, complex buildings. Clash detection can also be used to see hits among disciplines and create clash reports to help in resolving these coordination issues.

At Vanderweil, we not only use Revit for our BIM design, but also utilize Navisworks in our coordination meetings to help resolve "clashes" before submitting a project to the client for review. In doing so, it greatly improves our overall coordination process and works hand-in-hand with Revit.

Now to help standardize our Navisworks process, we are using iConstruct, which is an add-in for Navisworks. iConstruct allows us to create custom reports and information based on what we need on a project-to-project basis.

For more information on Navisworks, be sure to check out our new BIM/Revit page on Sharepoint.



Davidson College, Overall Mechanical Room

YOUNG PROFESSIONALS SPOTLIGHT



WILL KAIN

- Office Location**
New York
- Education**
Mechanical & Aerospace Engineering
Princeton University
- Department/Responsibilities**
Power Group, Mechanical
- Hometown**
Moorestown, New Jersey
- Hobbies**
Drums, piano, golf, & Philadelphia sports

Professional Aspirations
"Drive towards 2050 CO2 emissions targets through design and construction of energy efficient plants and buildings".

Fun Facts
"My friends and I built a portable, automatic can compactor in college to better utilize receptacle volume and encourage campus recycling".

Last Book Read
Energy Myths and Realities: Bringing Science to the Energy Policy Debate
by Vaclav Smil